

OWEB Effectiveness Monitoring Initiatives 2015-2017 Biennium



Ken Fetcho

November 2, 2015

NOWC/OACD Fall Gathering

Presentation Outline

Overview

- * OWEB's Programmatic EM Initiatives for 2015-2017
- * OWEB's interest in CREP effectiveness monitoring

Highlight

- * CREP Three Tier Study Design
- * Role of CREP Advisory Group
- * Progress to date on CREP EM project

2015-2017 Programmatic EM Initiatives

Title

Study Years

Location

Middle Fork John

2007-2017

Middle Fork

Day River IMW

ongoing

John Day River

Summary:

Using a watershed scale approach to determine the effectiveness of stream restoration to record a measurable increase in salmon populations and habitat.

2015-2017 Programmatic EM Initiatives

<u>Title</u>	<u>Study Years</u>	<u>Location</u>
CREP EM	2014-2017 ongoing	Statewide

Summary:

Report on the status and condition of existing CREP projects.

2015-2017 Programmatic EM Initiatives

Title

Study Years

Location

Livestock Exclusion

2006-2012

Statewide

ongoing

Summary:

Coordinated BACI effectiveness monitoring with WA SRFB to evaluate success of livestock exclusion fencing projects.

2015-2017 Programmatic EM Initiatives

Title

Study Years

Location

SIP Accomplishment
Reporting

2014- 2016

Deschutes
Willamette
Upper Klamath

Summary:

OWEB staff is writing reports to describe the investments and accomplishments made by existing Special Investment Partnerships (SIPs). This framework will also guide how Focused Investment Partnerships (FIPs) progress is assessed and reported to the Board in the future.

2015-2017 Programmatic EM Priorities

Title

Study Years

Location

Focused

2016- future

To be determined

Investment

Partnership (FIP)

EM

Summary:

Work with newly selected FIPs to develop and provide support for implementation of monitoring plans to measure progress towards ecological outcomes.

2015-2017 Programmatic EM Initiatives

Title

Study Years

Location

Monitoring/EM

Not yet initiated

Statewide

Grant Application

Guidance Development

Summary:

Work with the OWEB Board Subcommittee on Monitoring, technical experts, and Grant Program staff to improve monitoring and EM grant solicitation guidance to identify monitoring priorities the agency is interested in funding through the Open Solicitation grant program.

Oregon's Investment in CREP

As of FFY 2014:

- Invested approximately \$21 million in CREP since 1999

 - includes TA, state agencies' contribution and OWEB's cost share

- 1,623 contracts enrolling approximately 41,000 acres

 - target is 100,000 acres

 - WA has enrolled approximately 11,000 acres

Importance of Riparian Restoration and Monitoring

- * High priority in 2015 PCSRF application
- * Willamette Basin Riparian Peer to Peer Learning
- * Ecosystem Services pilot projects
- * DEQ modelling pilot in So. Willamette
- * Governor and Legislature funding Clean Water Partnership

OWEB CREP/Riparian Studies to Date

- * Statewide Survey of OWEB Riparian and Stream Enhancement Projects (Anderson and Graziano, 2002)
- * An ecological assessment of Oregon's CREP cumulative impact incentive program (Bartuszevige, Diebel and Kennedy, 2009)
- * Riparian Restoration Effectiveness Monitoring (Demeter, 2010)
- * OWEB-WA SRFB Coordinated Monitoring Program for Livestock Exclusion Projects (Tetra Tech, 2012)
- * Willamette Riparian Revegetation Effectiveness Study (BEF, 2015)

http://www.oregon.gov/OWEB/MONITOR/pages/effective_monitoring.aspx

2004 CREP Agreement

- * Refined Objectives
- * Added CWS ECREP program in WA County
- * Established annual enrollment targets
 - Coastal Basins
 - Columbia Basin
 - Interior Drainages
- * Described State of OR's role to perform EM

EM Requirements in 2004 Agreement

- * Develop a Study Plan
- * ID Study Watersheds and implement field studies
- * Provide data and monitoring results

CREP EM Study Design

Overall Goal

1. Report on the status and condition of previously implemented CREP projects.
2. Establish a long-term monitoring program to evaluate the effectiveness of CREP projects implemented across Oregon to meet the objectives agreed upon in the 2004 CREP Agreement Amendment.

Summary of 3 Tier Study Design

Tiers:

1. Assess existing CREP projects utilizing existing information.
2. Perform an assessment of existing projects by collecting data in the field and compile information from contract files.
3. Establish a Before-After-Control-Impact (BACI) study to track changes associated with newly enrolled contracts over a 10-year period.

Tier 1 Assessment Objectives:

Compile existing information to determine:

- how projects are distributed across the state
- which Conservation Practices are enrolled
- help establish the sampling universe for Tier 2

Tier 1 Summary

- * Developed series of metrics and questions to understand what types of info is collected and how it is stored
- * Interviewed 13 CREP partners across state
- * Drafted summary of findings
 - 12 of the 22 metrics were deemed to be of high value to inform the Tier 1 Assessment
 - Will compile 8 of the 12 metrics in coordination with FSA that are readily available

Tier 1

Preliminary Results

Conservation Practice	Total Acres
21	226.7
22	31,733.9
23	127.9
29	8,510.0
30	390.1

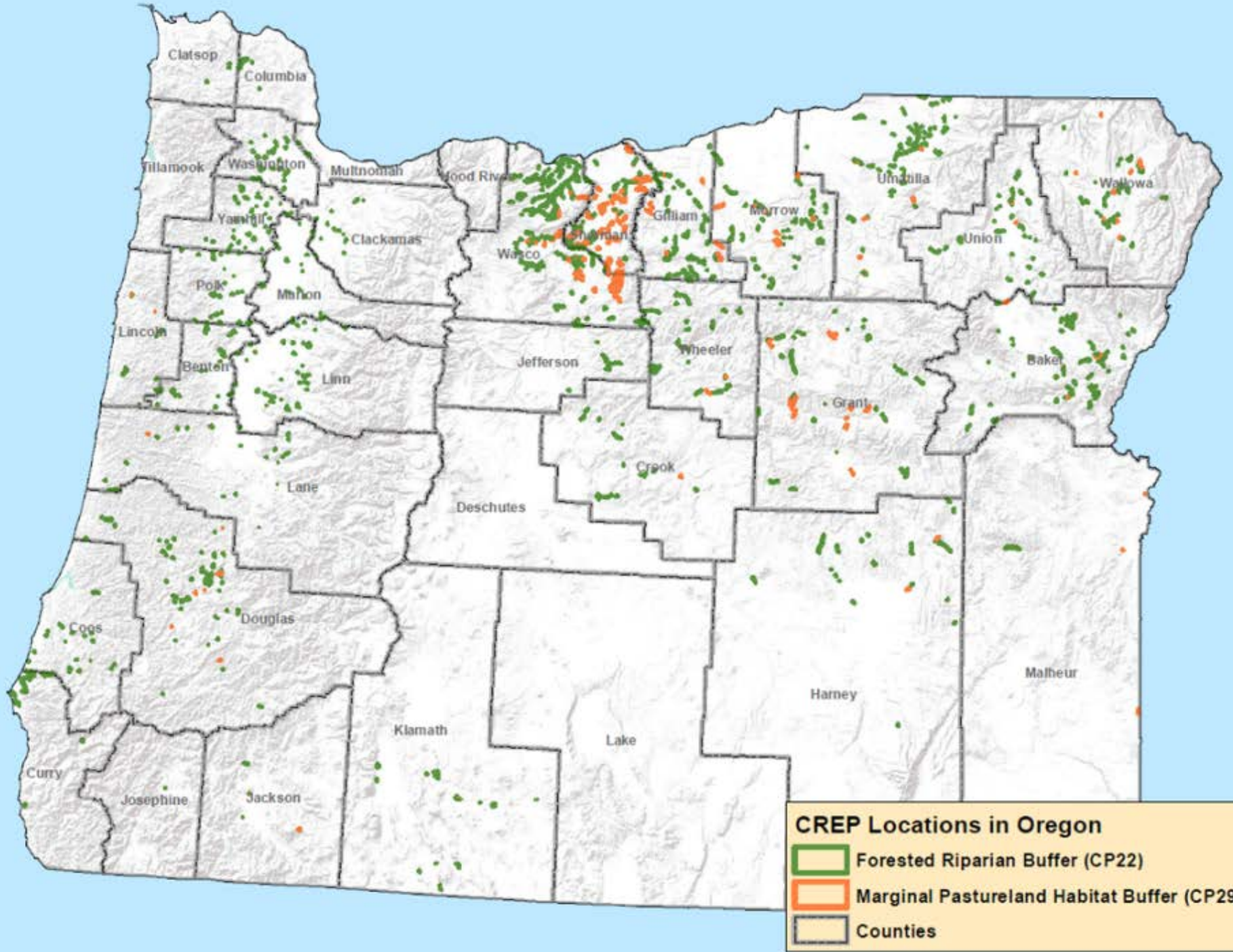
CP 21 = Filter Strips

CP 22 = Forested Riparian Buffer

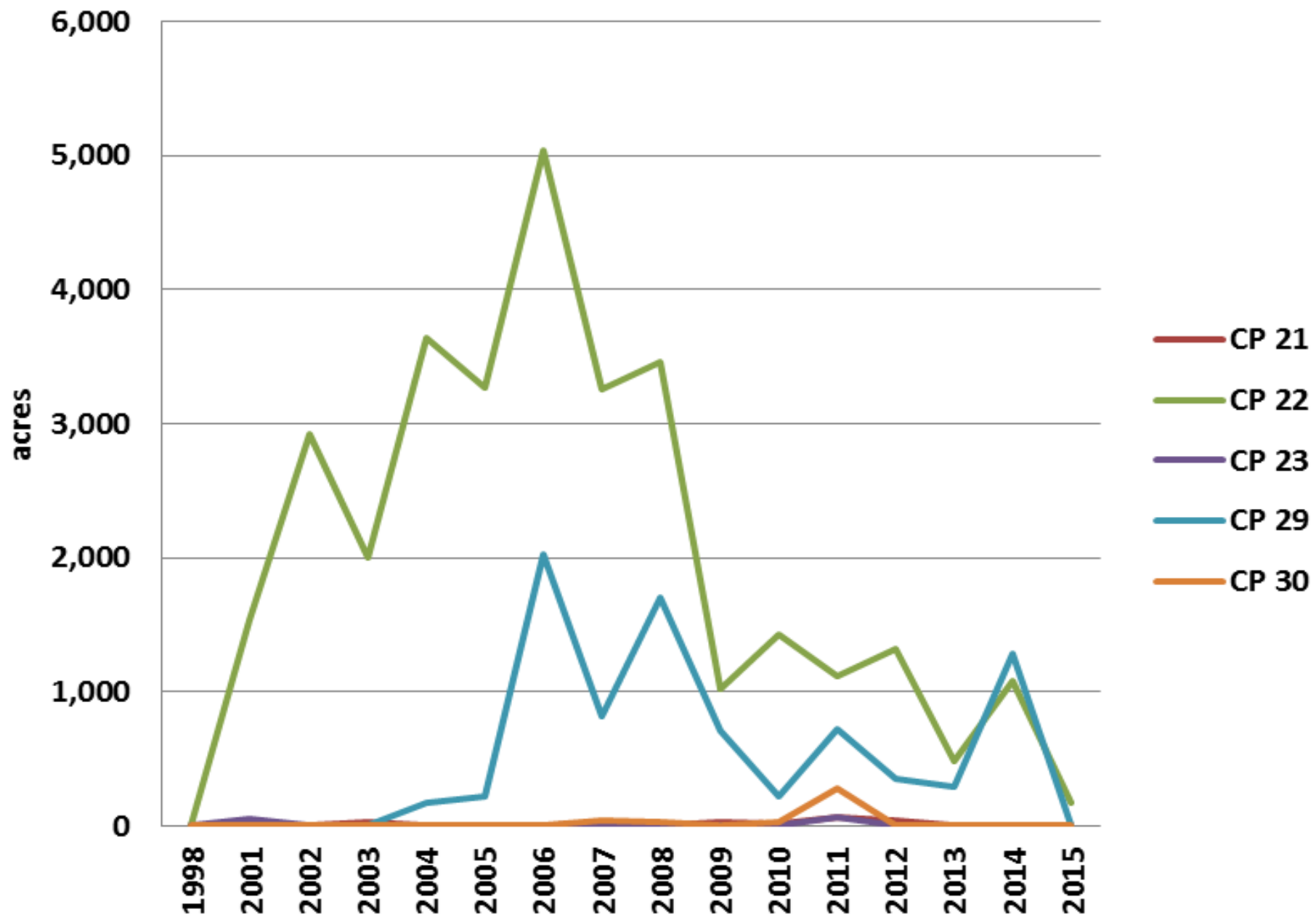
CP 23 = Wetland Restoration

CP 29 = Marginal Pastureland Habitat Buffer

CP 30 = Marginal Pastureland Wetland Buffer



Acres Enrolled in each CP by Year



Summary of Tier 2

- * Field and contract file data collection to assess existing projects

Based on findings of Tier 1 assessment:

- * High intensity - more detailed assessment using EPT design

Tier 2 Assessment Objectives

- * Compare treated to untreated areas:
 - Riparian vegetation layers and canopy cover
 - Percent woody cover (or the potential vegetation indicator of buffer success for the specific CP implemented)
 - Overall proportion of stream bank actively eroding
 - Percent cover of invasive species, including noxious spp.
- * Determine extent of livestock use and fence condition

Summary of Tier 3 Assessment

- * Initiate after Tiers 1 and 2
- * Incorporate findings into Tier 3
- * Similar objectives as Tier 2
- * Track 10 – 15 newly enrolled sites
- * Compare to untreated sites following (BACI) design at:
 - 0, 1,3,5 and 10 year intervals

Role of Advisory Group

Primary:

- * Technical input on topics:
 - vegetation assessment methods for different CPs, success criteria, selection and use of control sites, etc
- * Interaction with contractor to define geographic and temporal scope for Tier 2
- * Landowner contact guidance and assistance for access
- * Compile information from contract files
- * Review draft products from contractor
- * Assist with interpretation of findings
- * Development of recommendations

Secondary:

- * Communication of intent and progress with local partners

Members of Advisory Group

- * **Shilah Olsen** – Wasco **SWCD**, District Manager, Wasco Co.
- * **Trent Luschen**- County Executive Director, Baker/Grant Co **FSA**
- * **Barbara Grant** - CREP Technician, Coos-Curry Co. **SWCD**
- * **Ken Diebel** - **OSU** Professor and **Malheur WC**, several Counties
- * **Josh Togstad** - CREP Technician-Yamhill and Marion Co. **SWCD**
- * **David Ferguson, Mike Merrill, Misty Seaboldt** -**NRCS**
- * **Kyle Abraham**- Water Quality Specialist, **ODF**
- * **Cheryl Hummon** - Statewide Riparian Specialist, **ODA**
- * **Kendra Smith** – Director, Model Watershed Program, **BEF**
- * **Brian Cochran** – Habitat and Monitoring Coordinator, **WA SCC**

Progress Update – CREP EM

- * Advisory Group established and held first meeting in June 2014
- * MOU with FSA for data sharing signed March 2015
- * Acquired data from FSA and generated Tier 1 Metrics
- * September 2015 signed contract with Stillwater Sciences
- * Re-engaged Advisory Group and Tier 2 was initiated October 2015

Next Steps

- * Finalize Study Design
- * Complete Tier 1 Assessment December 2015
- * Continue to do outreach with local offices and landowners with FSA
- * Complete Tier 2 data collection and analysis in 2016
- * Final Report completed early 2017

Comments/Questions

